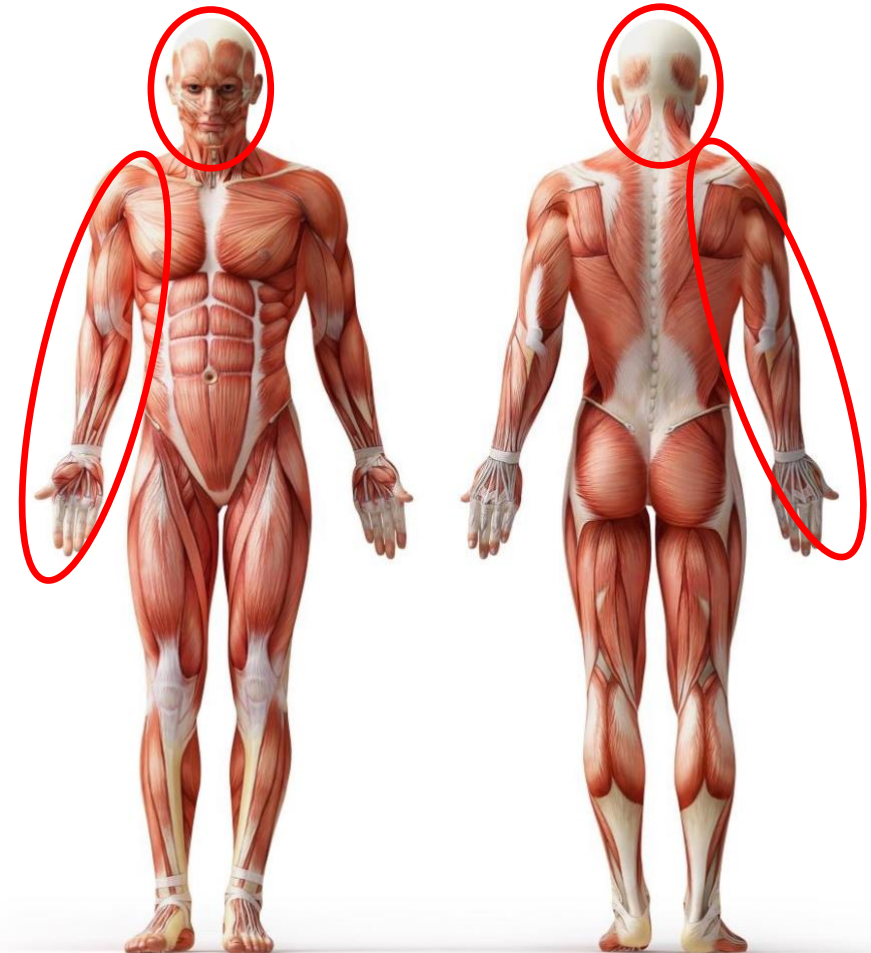


## Complete List of Injection Procedures

<u>Procedure</u>	<u>US</u>	<u>X/R</u>	<u>NW</u>	<u>IB</u>
Cervical facets and cervical facet denervation		Y		Y
Cervical epidural		Y		Y
Stellate ganglion block - upper limb CRPS		Y		Y
Suprascapular nerve RF		Y		Y
Headaches - Occipital nerve blocks and RF		Y		Y
Facial pain - supra-orbital nerve block				Y
Botox Migraine				Y
Botox Muscle spasm				Y
Acromioclavicular joint injection	Y		Y	Y
Subacromial bursa injection	Y		Y	Y
Shoulder distension (frozen shoulder)	Y		Y	
Shoulder joint injection	Y		Y	Y
SS Calcific tendonitis barbotage	Y		Y	
SS Calcific tendonitis Shockwave			Y	
Suprascapular nerve block - diagnostic				Y
Biceps tendon sheath	Y		Y	
Distal biceps tendon	Y		Y	
Lat/Med epicondyle injection steroid	Y		Y	Y
Lat/Med epicondyle injection PRP	Y		Y	Y
Lat/Med epicondyle Shockwave			Y	Y
Elbow joint injection	Y		Y	Y
Olecranon (elbow) bursa injection	Y		Y	Y
Carpal Tunnel Syndrome injection	Y		Y	
Wrist ganglion injection	Y		Y	
Wrist joint injection	Y		Y	Y
Wrist tendon injection	Y		Y	
1st CMC joint injection (thumb)	Y		Y	Y
Trigger finger injection	Y		Y	
Finger joint or ligament injection	Y		Y	

### Head, Neck & Upper Limb

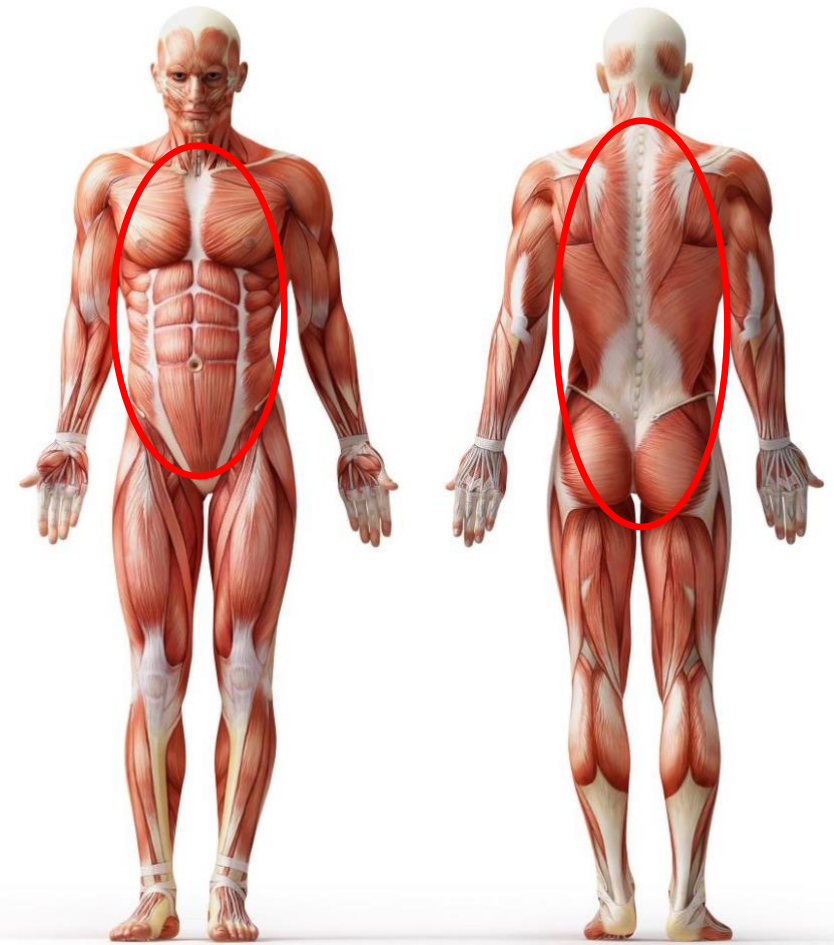


**US Guided:** Sportswise  
**X-Ray Guided:** Eastbourne DGH Michelham Ward

## Complete List of Injection Procedures

<u>Problem</u>	<u>US</u>	<u>X/R</u>	<u>NW</u>	<u>IB</u>
Sternoclavicular joint injection	Y/N*		Y	Y
Sterncostal joint injection	Y/N		Y	Y
Costovertebral joint injection	Y		Y	
Muscle trigger point injection	Y/N		Y	Y
Abdominal muscle injection	Y		Y	Y
Ilioinguinal nerve injection	Y		Y	Y
Abdominal pain - rectus sheath blocks				Y
Scar infiltration and pulsed RF				Y
Thoracic facets Fluoroscopy		Y		Y
Thoracic epidural Fluoroscopy		Y		Y
Thoracic paravertebral blocks		Y		Y
Thoracic root blocks Fluoroscopy		Y		Y
Intercostal nerve blocks and pulsed RF		Y		Y
Lumbar facets and lumbar facet denervation		Y		Y
Lumbar nerve root blocks and pulsed RF		Y		Y
Lumbar paravertebral block/ pulsed RF		Y		Y
Lumbar epidural Fluoroscopy		Y		Y
Lumbar sympathetic block and sympathectomy - CRPS, ischaemic Limb Pain		Y		Y
Splanchnic nerve block		Y		Y
Sacroiliac joint diagnostic and denervation		Y		Y
Sacroiliac joint injection US Guided	Y			
Sacroiliac joint injection Fluoroscopy		Y		Y
Piriformis injection +/- botox		Y		Y
Caudal epidural Fluoroscopy		Y		Y
Caudal Epidural US Guided	Y		Y	
Coccyx injection	Y	Y	Y	Y
Coccygeal nerve block /RF		Y		Y
Pudendal nerve block and pulsed RF		Y		Y
Hypogastric Plexus block-pelvic pain		Y		Y

### Chest, Abdomen, Thoracic and Lumbar Spine



**US Guided:** Sportswise  
**X-Ray Guided:** Eastbourne DGH Michelham Ward  
**Y/N:** \*Practitioner choice/preference – Discuss RF=Radio Frequency

## Complete List of Injection Procedures

### Hip, Groin & Lower Limb

<u>Problem</u>	<u>US</u>	<u>X/R</u>	<u>NW</u>	<u>IB</u>
Hip joint injection	Y		Y	
Iliopsoas tendon/bursa injection	Y		Y	
Hip pain – nerve block		Y		Y
Lat cut or femoral nerve blocks & pulsed RF		Y		Y
Lumbar plexus/psoas compartment block		Y		Y
Gt Troch Enthesopathy / Bursitis injection	Y		Y	Y
Gt Troch Enthesopathy - <i>Shockwave</i>			Y	Y
Hamstring tendon origin	Y		Y	
Quadriceps Tendon	Y		Y	
Knee Joint aspiration	Y		Y	
Knee joint injection - steroid			Y	Y
Knee joint injection - HA/PRP			Y	Y
Knee bursa injection	Y		Y	
Patella Tendinopathy – High volume Injection	Y		Y	
Patella Tendon – PRP	Y		Y	Y
Patella Tendon - <i>Shockwave</i>			Y	Y
Knee pain - genicular nerve blocks and denervation		Y	Y	Y
Iliotibial band injection	Y		Y	Y
Calf muscle - recurrent tear - injection	Y		Y	
Achilles tendinopathy - High volume Injection	Y		Y	
Achilles pain - <i>Shockwave</i>			Y	Y
Retrocalcaneal bursa injection	Y		Y	
Achilles insertion injection	Y		Y	
Ankle tendons injection	Y		Y	
Ankle joint injection			Y	Y
Plantar Fascia injection	Y		Y	Y
Plantar Fascia <i>Shockwave</i>			Y	Y
Toe joint injections	Y		Y	
Morton's Neuroma injection	Y		Y	



## Complete List of Injection Procedures

Miscellaneous Procedures performed by Intazar at the Eastbourne DGH Michelham Ward

1. Intra-venous lidocaine infusions - (Fibromyalgia/Chronic widespread pain/ neuropathic pain)
2. Intravenous Regional Anaesthesia/Biers's block - (CRPS upper/lower limb)

**NW – Prof Nick Webborn**

**IB – Dr Intizar Bashir**